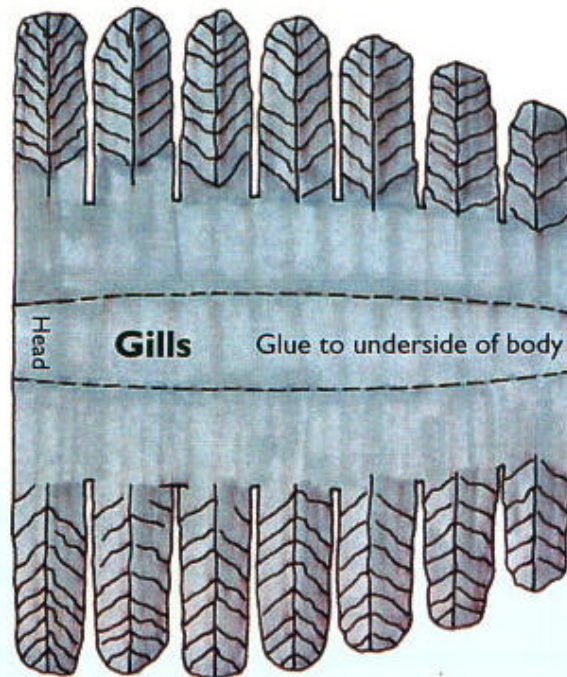
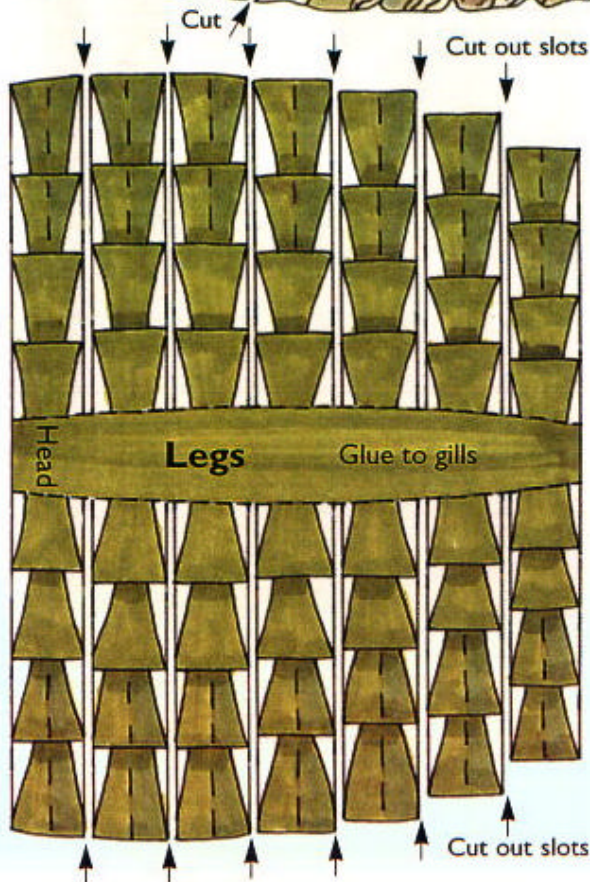


Trilobite Model



Completed model Trilobite



1. Cut out the trilobite's body, gills and legs.
2. Fold along the dotted lines.
3. Glue gills to underside of trilobite's body.
4. Glue legs to underside of trilobite's gills.
5. Glue antennae to underside of head.



Australian Geological Survey Organisation
Geoscience Awareness Unit - Phone (02) 62499497

Produced in association with USGS. Open File Report 94-667 by Tau Rho Alpha